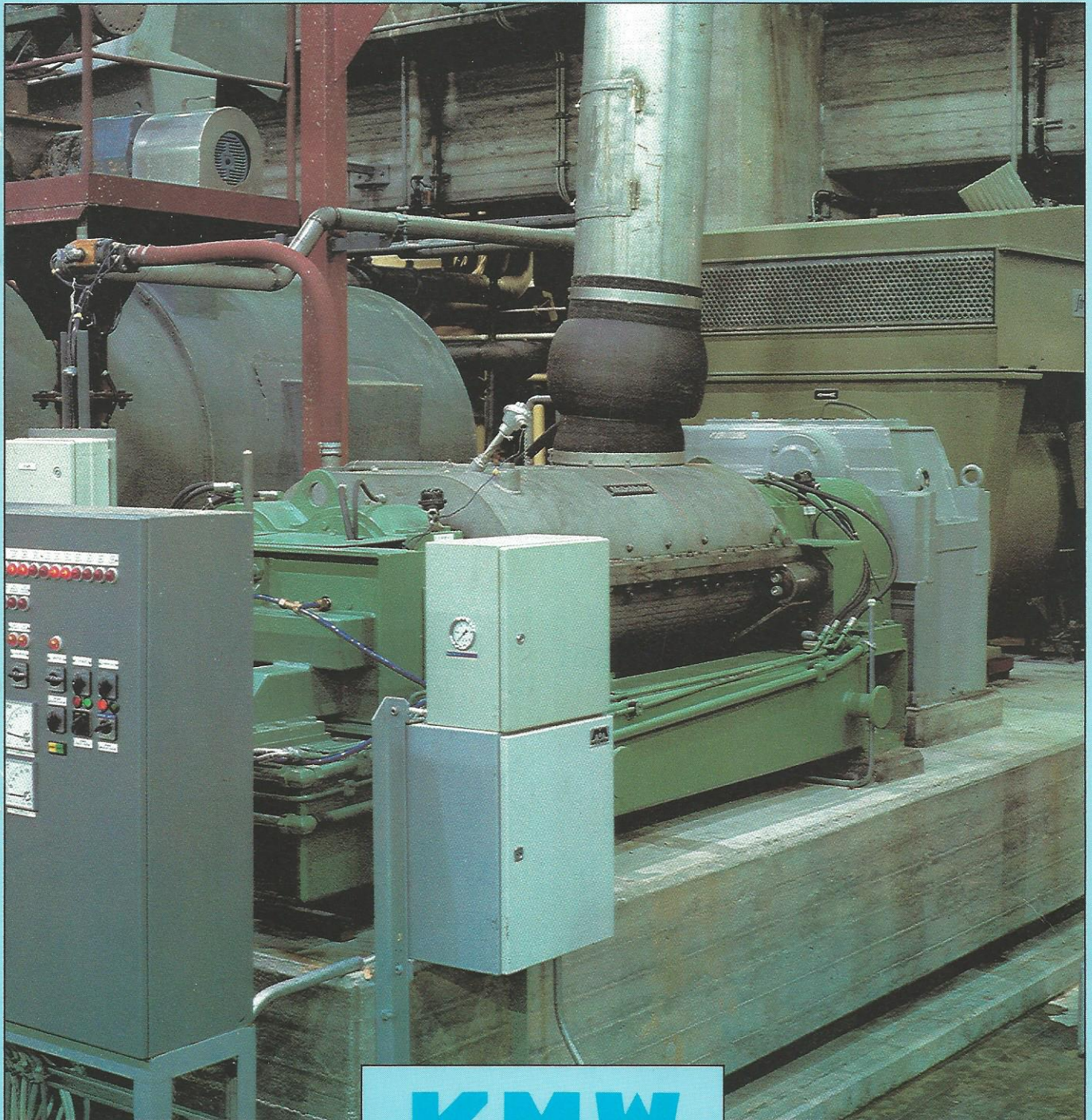


FROTAPULPER®

a unique part of our systems for treatment of paper pulps,
waste paper and screen rejects.



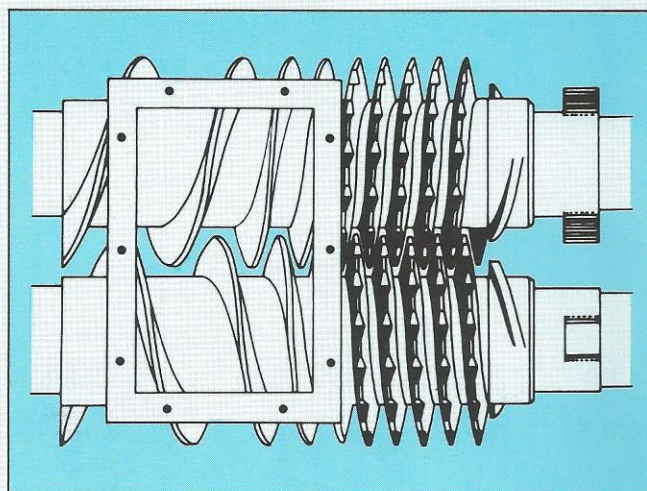
KMW

FROTATION

A method for gentle treatment of wood fibers at high consistency. The method is used to improve many properties of pulp and paper products.

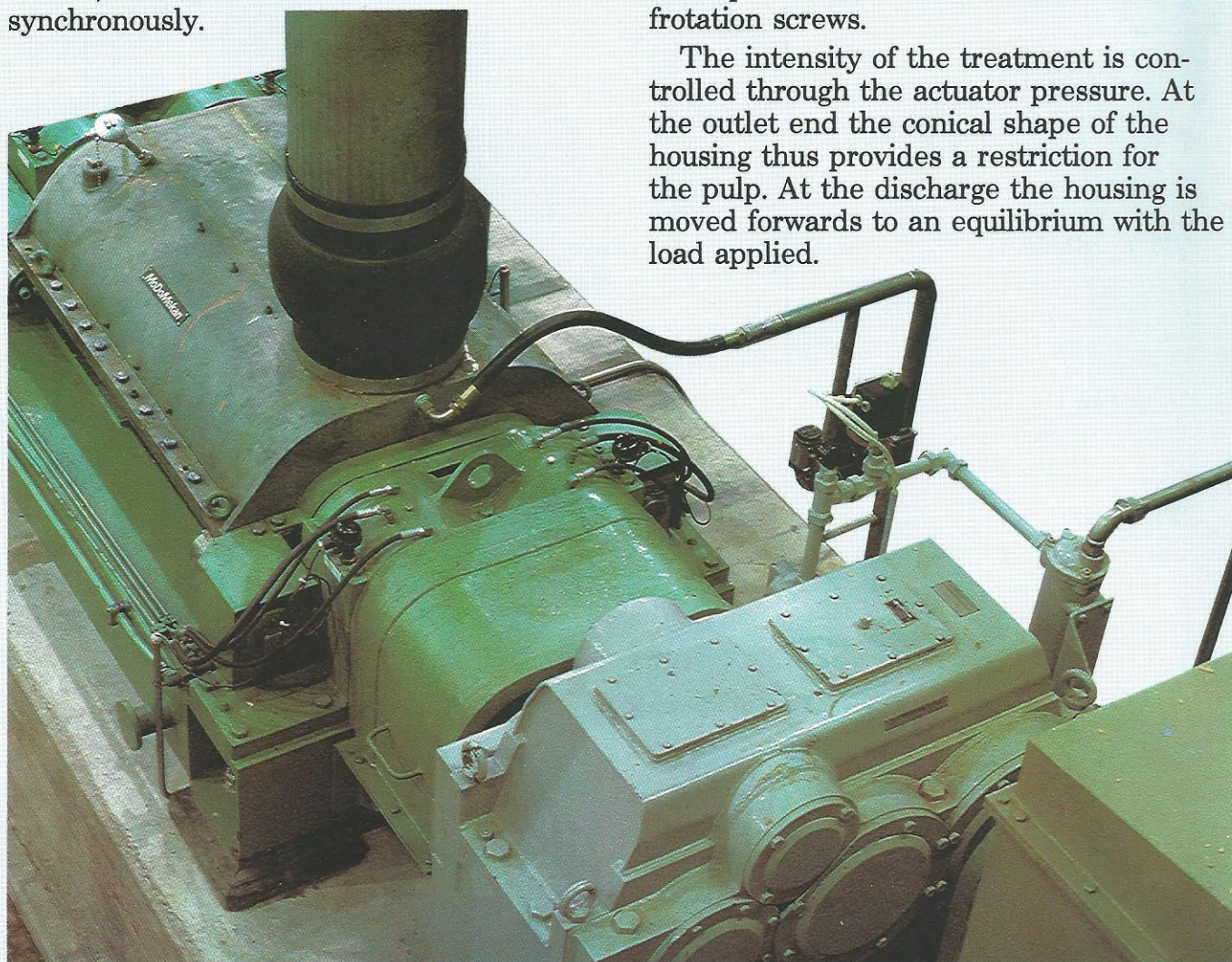
FUNCTION

The main features of the FROTAPULPER[®] machine are the two intermeshing frotation screws. These screws, one of which has a right-hand thread and the other a left-hand thread, rotate synchronously.

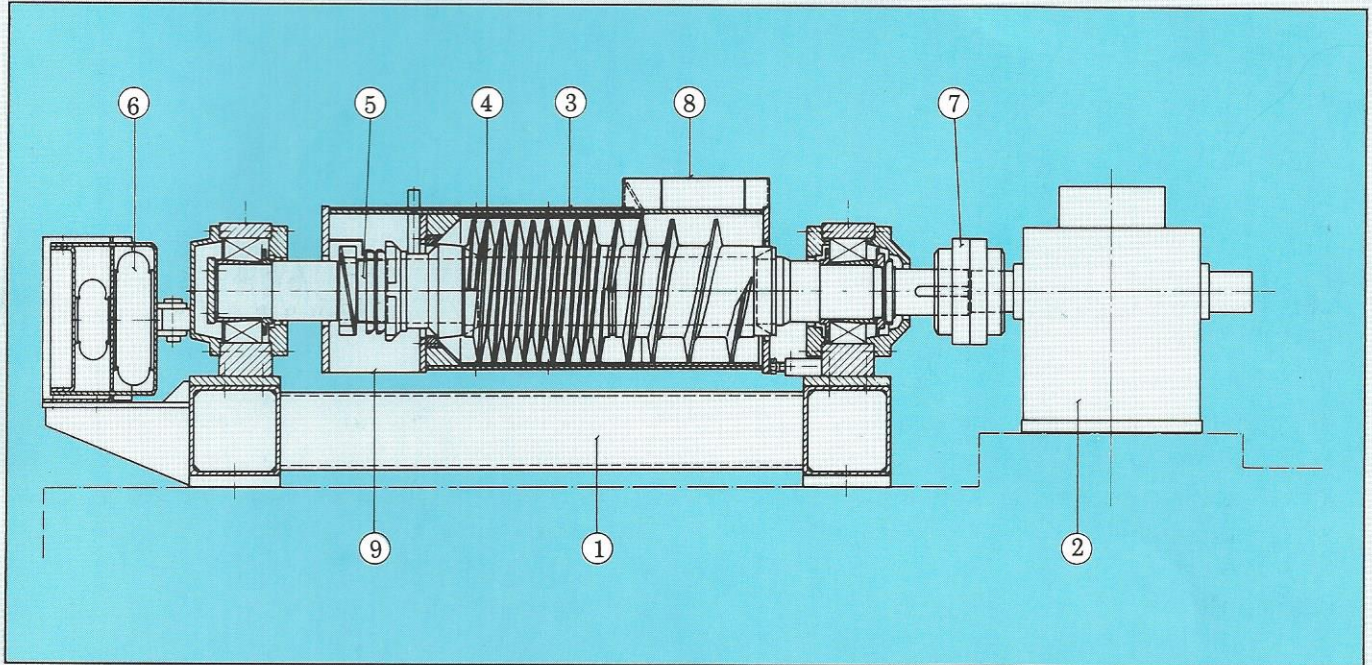


The pulp is introduced through the inlet opening of the frotation housing. The feed section of the machine conveys the pulp to the processing zone, where the frotation takes place between the flanks of the frotation screws.

The intensity of the treatment is controlled through the actuator pressure. At the outlet end the conical shape of the housing thus provides a restriction for the pulp. At the discharge the housing is moved forwards to an equilibrium with the load applied.



MAIN COMPONENTS



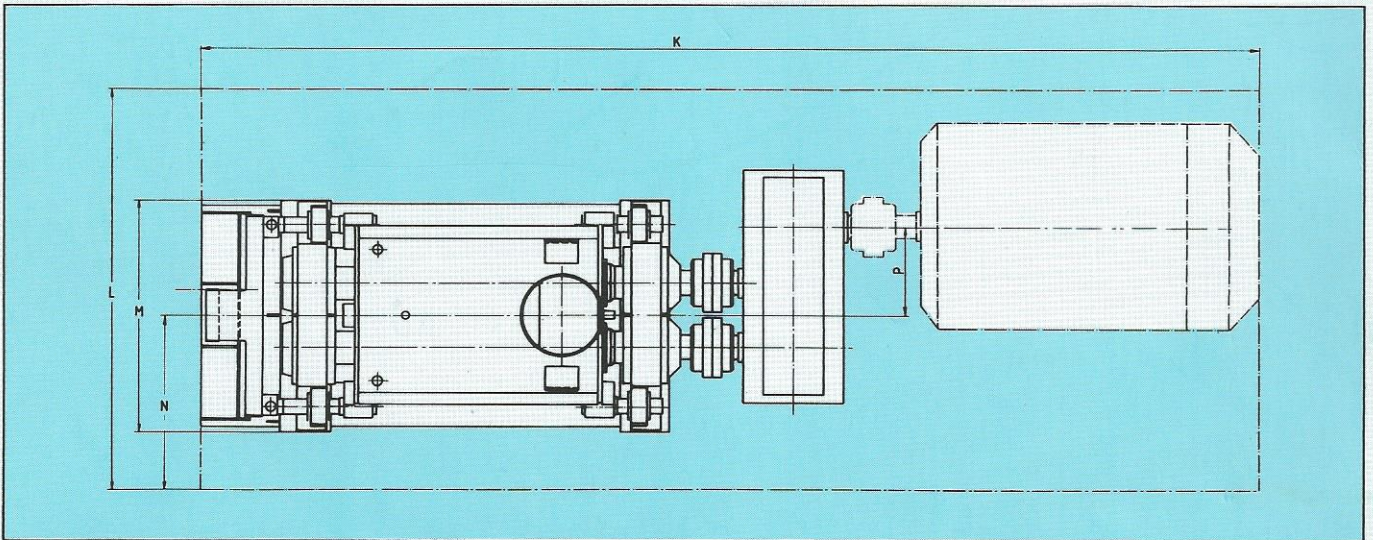
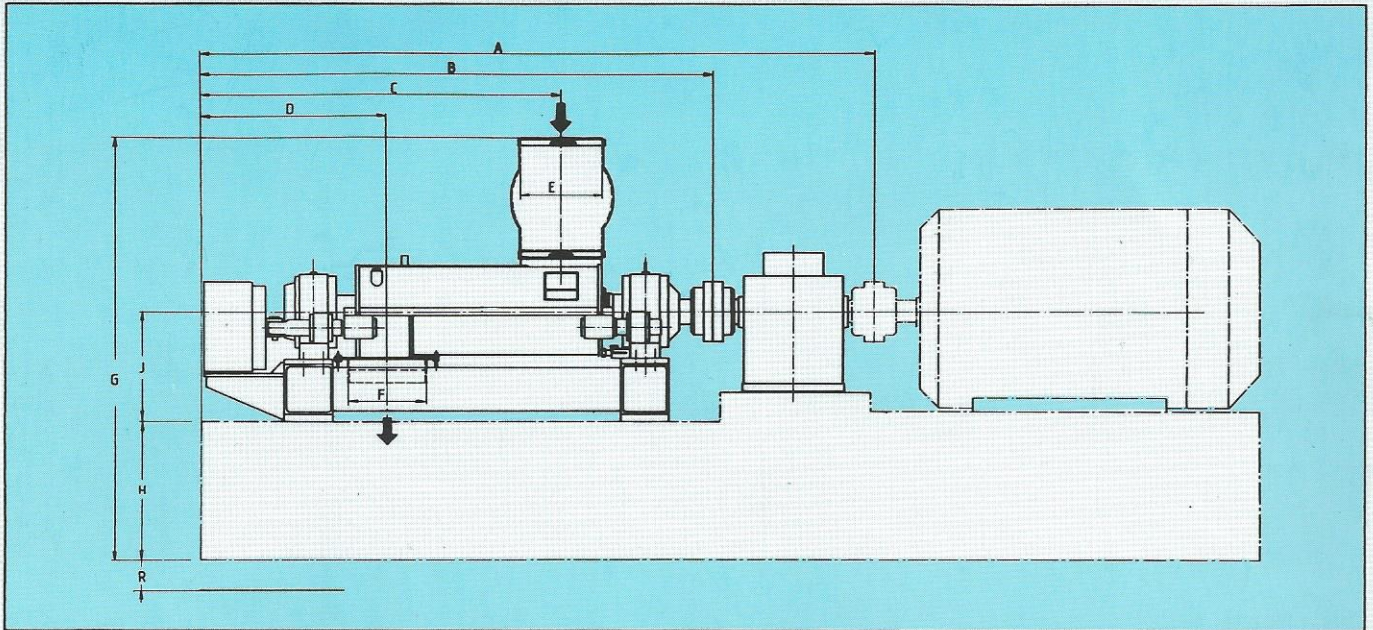
1. Bottom frame of welded construction.
2. Gear box with one input and two output shafts for direct coupling to the FROTAPULPER® machine. A circulation system for lubrication is included. The gear box is to be mounted on a concrete bed.
3. Movable housing of welded construction with all parts in contact with pulp made of stainless steel.
The housing is provided with replaceable wear rings and wear linings.
4. Counter-rotating shaft assemblies with replaceable feed screw and frothation screw sections.
All screws made of stainless steel.
5. Shafts of stainless steel.
6. Load actuators consisting of bellows that move the housing axially.
7. Flexible couplings between the gear box and the FROTAPULPER® machine.
8. Inlet
9. Outlet

TECHNICAL DATA

Type	400	1000	2000
Capacity, t/d, max.	80	200	400
Feed consistency	≥30 %		
Motor size, kW, max.	400	1000	2000
Speed, rpm	700-1000		
Net weight, t excl. of gear box	2.4	4.0	8.3

FROTAPULPER®

DIMENSIONS



	H 400	H 1000 B	H 200
A	3085	3475	3810
B	2245	2665	3250
C	1533 ± 30	1915 ± 30	2370 ± 30
D	850	1030	1330
E	Ø 356	Ø 412	Ø 512
F	Ø 356	Ø 397	Ø 400
G	1870	2105	2200
H	500 - 700		

	H 400	H 1000 B	H 2000
J	435	545	660
K	4500	5400	7000
L	1700	2000	2300
M	1000	1150	1400
N	800	870	900
P	332,5	444	590
R	150	150	200


 THE AXEL JOHNSON GROUP
 PULP TECHNOLOGY

KMW AB, P.O.B. 1051, S-651 15 KARLSTAD, Sweden
 Phone +46 - 54 11 52 60, Telex 66380 KMW CELL S

HANST KOBES AB/Normans.